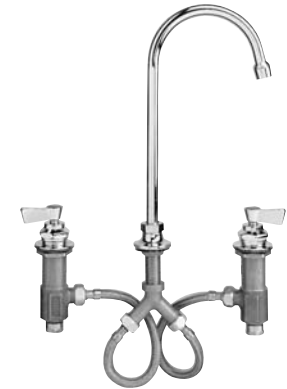


Replacement Parts for Widespread Deck Faucets



Widespread Deck Faucet Product Installation Guide

Since 1936, Fisher Manufacturing Company has manufactured heavy-duty, high quality plumbing products and hardware specialties for the food service industry. For three generations, the Fisher family has adhered to a strict dedication of and overall value. When you install Fisher products... you install the best. Our hardware is manufactured with the standardization of internal mechanisms. All chrome plating is triple plated copper, nickel and chrome for durability. Every piece of equipment we make is rigorously tested in both our modern in-house testing center and in actual field situations under extreme conditions. Every detail is thoroughly checked. Before we make our products available to you, they pass each and every test. You get proven performance. Guaranteed.



#1899 - Widespread Deck Faucet with 12" Swivel Gooseneck Spout

#1910 - Widespread Deck Faucet with 6" Swivel Gooseneck Spout

Limited One Year Warranty

Fisher Manufacturing Company warrants its products and parts thereof (except as noted below) against defects in materials or workmanship for a period of one year after the date of original purchase. During this period Fisher Manufacturing Company will replace a defective product or part without charge to you, provided that the entire product is delivered to Fisher Manufacturing Company. All transportation and insurance charges for shipping the product to and from Fisher Manufacturing Company must be borne by you. Charges for transportation and insurance may, at the option of Fisher Manufacturing Company, be refunded depending upon our investigation of the warranty claim. This warranty does not cover external finish (except at date of original purchase) or labor costs not specifically authorized by Fisher Manufacturing Company.

A full and complete copy of our One Year limited warranty is available upon request.

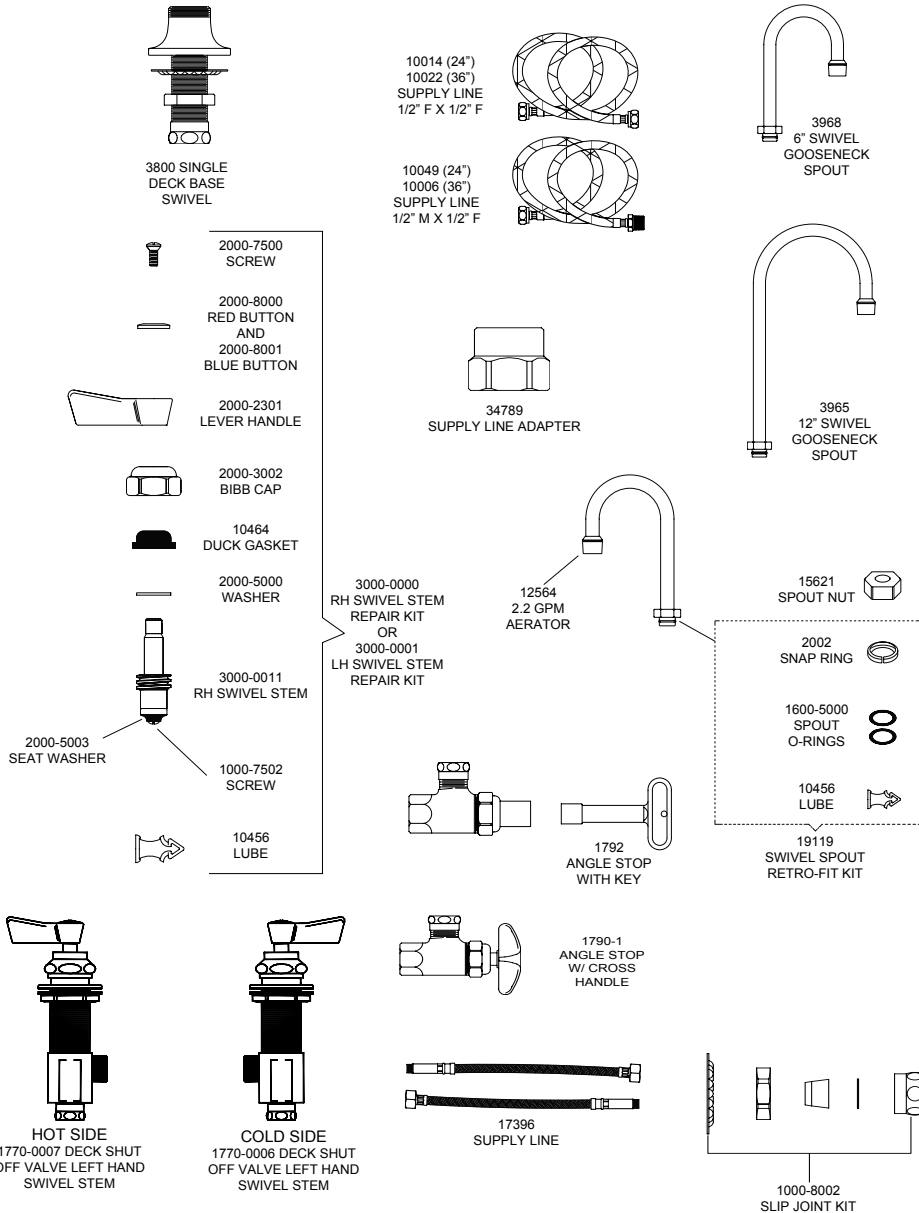
KEEP THIS MANUAL FOR FUTURE REFERENCE



ANSI/A112.18.1M, ANSI/NSF 61.9

FISHER MANUFACTURING COMPANY - TOLL FREE: 800-421-6162 FAX: 800-832-8238

www.fisher-mfg.com



FISHER
MANUFACTURING COMPANY
PO BOX 60, TULARE, CA 93275
(800)421-6162, FAX: (800)832-8238
www.fisher-mfg.com

Installation Instructions for Widespread Deck Faucets

BE SURE TO CHECK WITH YOUR LOCAL DEPARTMENT HAVING JURISDICTION REGARDING BACKFLOW PREVENTION

Installation Notes:

- Be sure to shut off water supply before beginning.
- Use pipe thread sealant such as PST on all threaded joints.
- Check the packaging for missing items BEFORE beginning installation. If items are missing, contact your supplier.

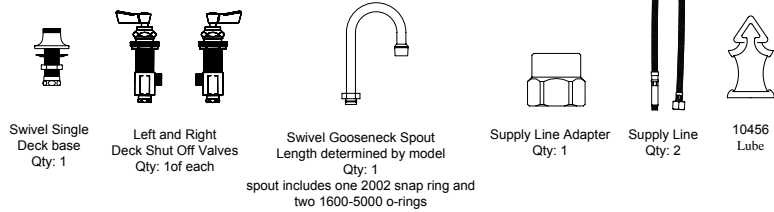
Tools Required for Installation

- Pipe Wrench
- Medium Sized Crescent Wrench
- Pipe Thread Sealant



Package Contents

The box should contain the following:

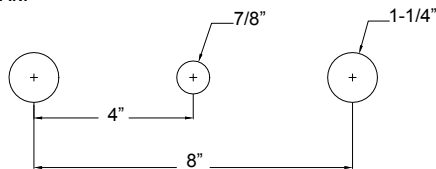


Installation Instructions

1. Cut rough-in holes.
2. Mount spout base, then tighten with washer and locknut.
3. Screw on supply line adapter, use pipe sealant on the connection, to the nipple.
4. Add a small amount of o-ring lube to the o-ring on the supply lines and tighten supply lines in the supply line adapter.
5. Mount both control valves, and tighten with locknut. Connect supply lines to control valves and tighten. Make sure supply lines are not kinked or crimped after install.
6. Apply o-ring lube to the o-rings on the swivel gooseneck spout. Make sure the white snap ring is in place before mounting the spout. Mount the spout and tighten the gooseneck spout nut onto the faucet spout outlet.
7. Turn on water supply and check for leaks.

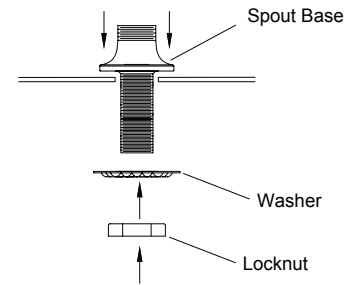
Step 1

ROUGH-IN:

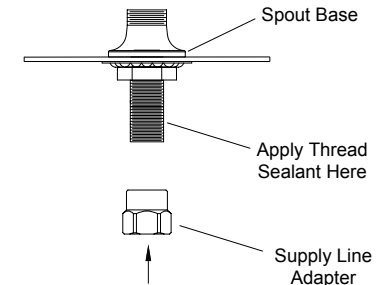


Installation Instructions Continued

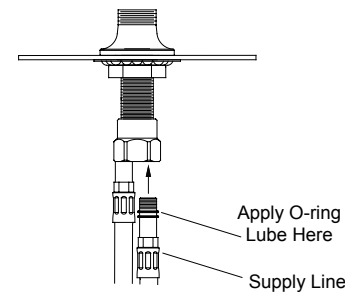
Step 2



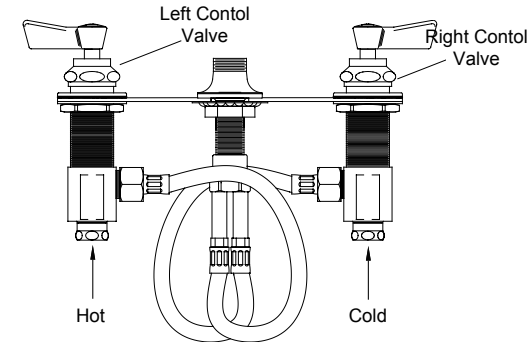
Step 3



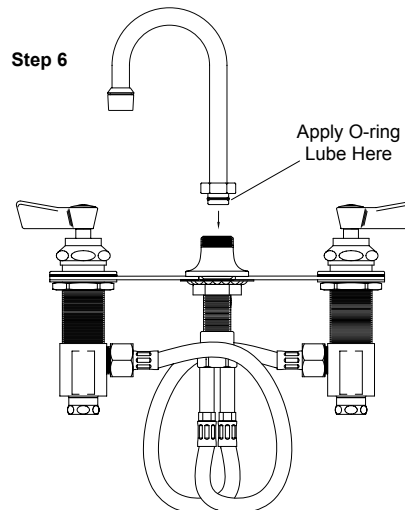
Step 4



Step 5



Step 6



Step 7

